

High-quality products and services create a healthy, harmonious and warm home for consumers worldwide!



## USER'S GUIDE



● Please read this instruction manual carefully to use correctly

### IDACS

test results \_\_\_\_\_

Mfg. date \_\_\_\_\_

Inspection date \_\_\_\_\_

Inspectors \_\_\_\_\_

NO. \_\_\_\_\_

### WARRANTY CARD

Purchase date \_\_\_\_\_

Purchase store \_\_\_\_\_

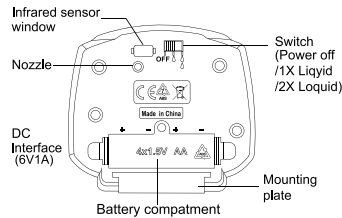
Ticket number \_\_\_\_\_

Address \_\_\_\_\_

tel \_\_\_\_\_ P.C. \_\_\_\_\_

Thank you for your purchase and selection of our products. May it bring convenience to your future life.

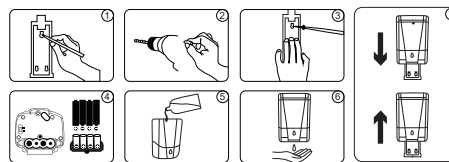
#### FEATURES:



#### SPECIFICATIONS:

Dimensions	L110xW100x H165mm
Capacity	700ml
Drip volume	0.5s/1s/time
Material	ABS, AS
power supply	4pcs "AA" (Number 5) battery
voltage	DC6V
DC Interface	6v1A
Working current	120mA
Standby current	60uA
Sensing distance	0-6cm
Low battery	4.2V

#### INSTALLATION ICON:



#### INSTALLATION STEPS:

- To securely install the soap dispenser, use the back as a template to mark on the wall for drilling hole. (figure 2)
- Drill a 4mm hole and insert the plastic latch. (figure 2)
- Fix the back to the wall with two 4mm screws. (image 3)
- Put 4 "AA" batteries into the battery box, please arrange the batteries according to the diagram of the battery box. Battery, a wrong placement will damage the battery or the soap dispenser.
- Put the soap dispenser into the groove on the back and slide it to the bottom. (Figure 4)
- Open the top cover and pour liquid soap, please place it 1cm away from the container. (Figure 5)
- During the first use, since the soap liquid has not yet flowed into the liquid pipe, please run the soap dispenser Times until the liquid is discharged. (Image 6)
- Please refer to it after installation. (Figure 7)

#### INSTRUCTIONS FOR USE:

- When installing the soap dispenser, please keep the space under the soap dispenser above 40cm.
- Choose an appropriate location to install the soap dispenser. Do not expose the machine to moisture or water.
- Do not install the soap dispenser on a mirror or a highly reflective surface, do not install the soap dispenser on Underwater.

- Do not use the soap dispenser under strong light. The strong light will damage the infrared sensor.
- Do not use alcohol or other chemical liquids.
- This product has a low voltage warning function. When you find that the LED light keeps flashing, it indicates that the power The battery power is not enough, please pay attention to replace the new battery.
- If the soap dispenser does not work
  - Put your hand near the detector.
  - Check your battery again.
  - Whether the switch is turned on.
  - Check the lower surface of the soap surface, please Remove the soap dispenser or install the soap dispenser to a higher place.
- If no soap drops
  - If there is residual air in the infusion tube for the first time, please operate the soap dispenser Several times.
  - When the temperature is low in winter, the liquid may condense, please pour some warm water (About 60 ° C) After waiting for a few minutes, just run the soap dispenser several times.
  - The soap liquid may not be enough.

#### MATTERS NEEDING ATTENTION AND MAINTENANCE:

- Please do not let dust fall into the soap dispenser, as this may block the passage opening, such as If you find that the container is dirty or has impurities, please replace it with soap.
- Use the soap dispenser frequently. If the soap dispenser is not used for a long time, the liquid soap may Will solidify.
- If there is almost 1cm of liquid soap left, add soap.
- After the battery is consumed, please replace it with a new battery in time.
- Clean the soap dispenser
  - When not in use, pour out the liquid soap inside, wipe it clean with a rag and take Get out the battery below.
  - Do not put the soap dispenser into the water for cleaning, as this will damage the circuit board.
  - Use a damp cloth and dry towel to clean the surface of the soap dispenser, and only dry the battery box Towels.

- Do not use strong corrosive chemical solvents to clean the product, so as not to cause the appearance of the surface Damaged or deformed.

\* Please save the warranty card to avoid losing the right of free warranty service.

\* This certificate is invalid.

#### PRODUCT WARRANTY DESCRIPTION

The company ensures that the products shipped from the factory comply with relevant safety standards and technical requirements, and guarantees The product cannot be fully functional during normal use and maintenance, and the company will hold the card Users provide one year free warranty service (excluding consumables).

- Within one year from the date of purchase, where confirmed by our maintenance personnel, Institution The manufacturing process, materials, etc. that cause failures and damages, you can get free warranty service.
- During warranty, a valid ticket and corresponding product warranty card shall be valid.
- In one of the following situations, although covered by the warranty, you cannot enjoy the free warranty service Business. The company will repair as much as possible, but will recover part of the cost.
  - The product is damaged due to incorrect power supply.
  - Damage caused by incorrect installation II.
  - Damage caused by modifications not approved by our company.
  - Damage caused by handling.
  - Natural disasters or man-made damage.
- The free warranty is only free for the maintenance of the applauded products, excluding those caused by maintenance Other costs.
- If the product is damaged beyond the free warranty period, the company guarantees to repair it as usual, but will Recover parts costs as appropriate.
- Use a liquid with a moderate concentration. Too high a concentration may result in slow or no fluid output Fluid phenomenon.